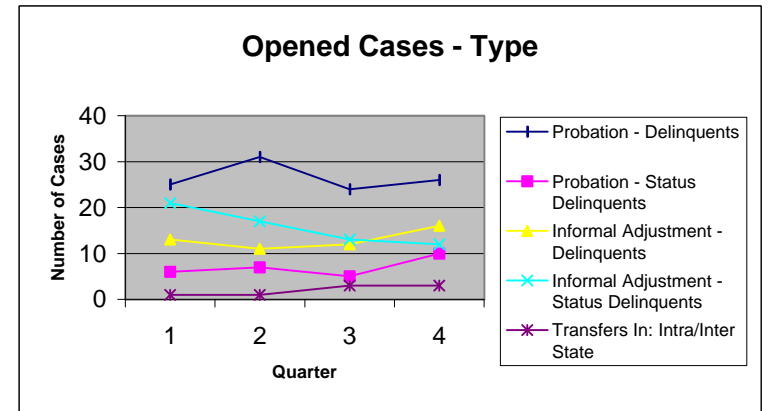


Juvenile Delinquency Probation Cases - 1998

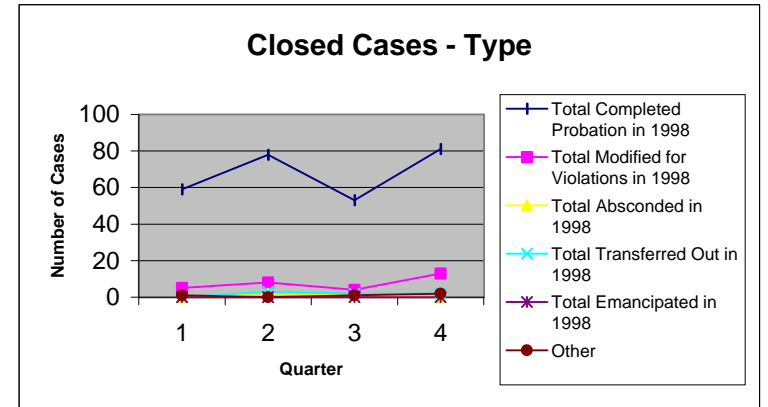
1998 Juvenile Probation

[Source: 1998 Morgan County Probation Reports filed with Division of State Court Administration]

	<u>1st QTR</u>	<u>2nd QTR</u>	<u>3rd QTR</u>	<u>4th QTR</u>	<u>Totals</u>
Supervisions Pending as of 1/1/98					210
Supervisions Opened					
Probation - Delinquents	25	31	24	26	106
Probation - Status Delinquents	6	7	5	10	28
Informal Adjustment - Delinquents	13	11	12	16	52
Informal Adjustment - Status Delinquents	21	17	13	12	63
Transfers In: Intra/Inter State	1	1	3	3	8
Total Received:	66	67	57	67	257
Percentage Referred to Formal Probation	52%				
Percentage Referred to Informal Adjustment	45%				



Supervisions Closed/Inactive					
Total Completed Probation in 1998	59	78	53	81	271
Total Modified for Violations in 1998	5	8	4	13	30
Total Absconded in 1998	0	2	1	0	3
Total Transferred Out in 1998	0	3	2	2	7
Total Emancipated in 1998	0	0	0	0	0
Other	1	0	1	2	4
Total Closed/Inactive:	65	91	61	98	315



Supervisions Pending as of 12/31/98		152
Percentage Completed Probation	86%	
Percentage Modified for Violations	10%	